

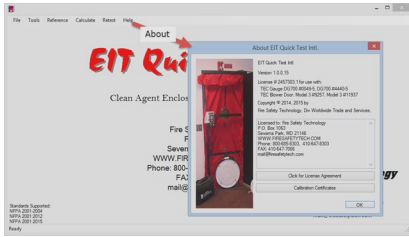


EIT Quick Test Intl

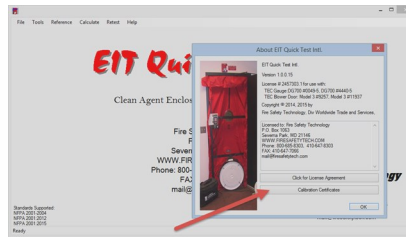
Special Features

Calibration Certificates:

We have included a way to have your calibration certificates easily available in case you are questioned while on a test site.

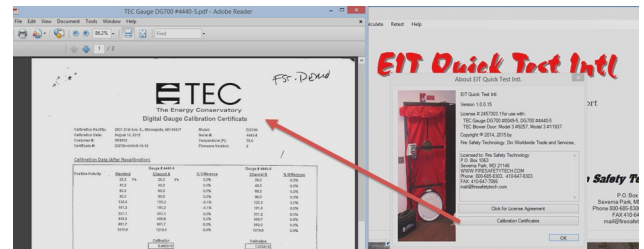


Click on the “Help” tab , then “About”



Then click on the “Calibration Certificates” button

This will bring up your calibration certificates, and “Calibration Requirements and Service” along with the TEC Equipment Service Form for recalibration of your equipment..



When you have your gauge or fan recalibrated, scan the certificates as a .pdf and place them in the “calibration certificates” folder which is located in the “references” folder which is located on your hard drive where you installed the program.

If you have questions about the NFPA calibration requirements please review the “Calibration Requirements and Service” page.

Name	Date modified	Type	Size
references	10/8/2015 12:59 PM	File folder	
ReportViewer	10/8/2015 12:59 PM	File folder	
xml	10/8/2015 12:59 PM	File folder	
bootstrap.fsl	10/8/2015 1:10 PM	FSL File	1 KB
Demo Test.fst	11/9/2015 12:18 PM	FST File	12 KB
dotNetFix40_Full_x86_x64.exe	11/18/2014 9:13 AM	Application	49,268 KB
en-US.dic	5/26/2014 6:52 PM	Text Document	1,069 KB
IntegrityTest.exe	10/7/2015 8:58 PM	Application	1,514 KB
NetSpell.SpellChecker.dll	5/26/2014 6:52 PM	Application extens...	104 KB
NetSpell.SpellChecker.xml	5/26/2014 6:52 PM	XML File	90 KB
preferences.eit	11/2/2015 10:02 AM	EIT File	2 KB
ReportViewer.msi	11/18/2014 9:16 AM	Windows Installer ...	7,444 KB

If your gauge or fan needs calibration fill out the “TEC Equipment Service Form” and send them directly to The Energy Conservatory in Minneapolis.

Fire Safety Technology

P.O. Box 1063
Severna Park, MD 21146 U.S.A.
Phone 800-685-8303, 410-647-8303
FAX 410-647-7066
e-mail: mail@firesafetytech.com
www.firesafetytech.com